



TK International  
020 7794 8700  
www.t-k.co.uk

Residential Sales  
Residential Lettings  
Property Management

Sales Office:  
9 Heath Street  
Hampstead  
London NW3 6TP  
E: sales@t-k.co.uk

Lettings Office:  
16-18 Heath Street  
Hampstead  
London NW3 6TE  
E: lettings@t-k.co.uk

tk.international  
TK International  
TK International

Est.  
1998



## Willow Road Hampstead Village NW3

Tucked away on a peaceful, tree-lined turning just moments from the vast greenery of Hampstead Heath, this beautifully presented two bedroom, two bathroom patio apartment offers an exceptional lifestyle in one of Hampstead's most coveted settings.

Positioned within an elegant red brick Victorian residence, the home spans approximately 840 sq ft and has been thoughtfully designed to maximise light and space. A stylish reception room forms the heart of the property, complemented by a sleek, fully integrated kitchen perfect for both everyday living and entertaining. Doors open directly onto a private patio, creating a seamless indoor outdoor flow.

The principal bedroom features a contemporary en-suite, while a second generously sized bedroom is served by a modern family bathroom. High quality wood flooring and a calm, neutral palette run throughout, enhancing the sense of understated sophistication.

What truly sets this home apart is its unrivalled location. The sweeping landscapes, ancient woodlands, and iconic bathing ponds of Hampstead Heath are quite literally on your doorstep, offering a rare connection to nature in the capital. Meanwhile, the boutiques, cafés, and historic charm of Hampstead Village are just a short stroll away, delivering the perfect balance of tranquillity and vibrant village living.

Excellent transport links are close at hand, with South End Green and Belsize Park both within easy reach, providing access to the Northern Line and Overground for swift connections across London.

**£999,950**

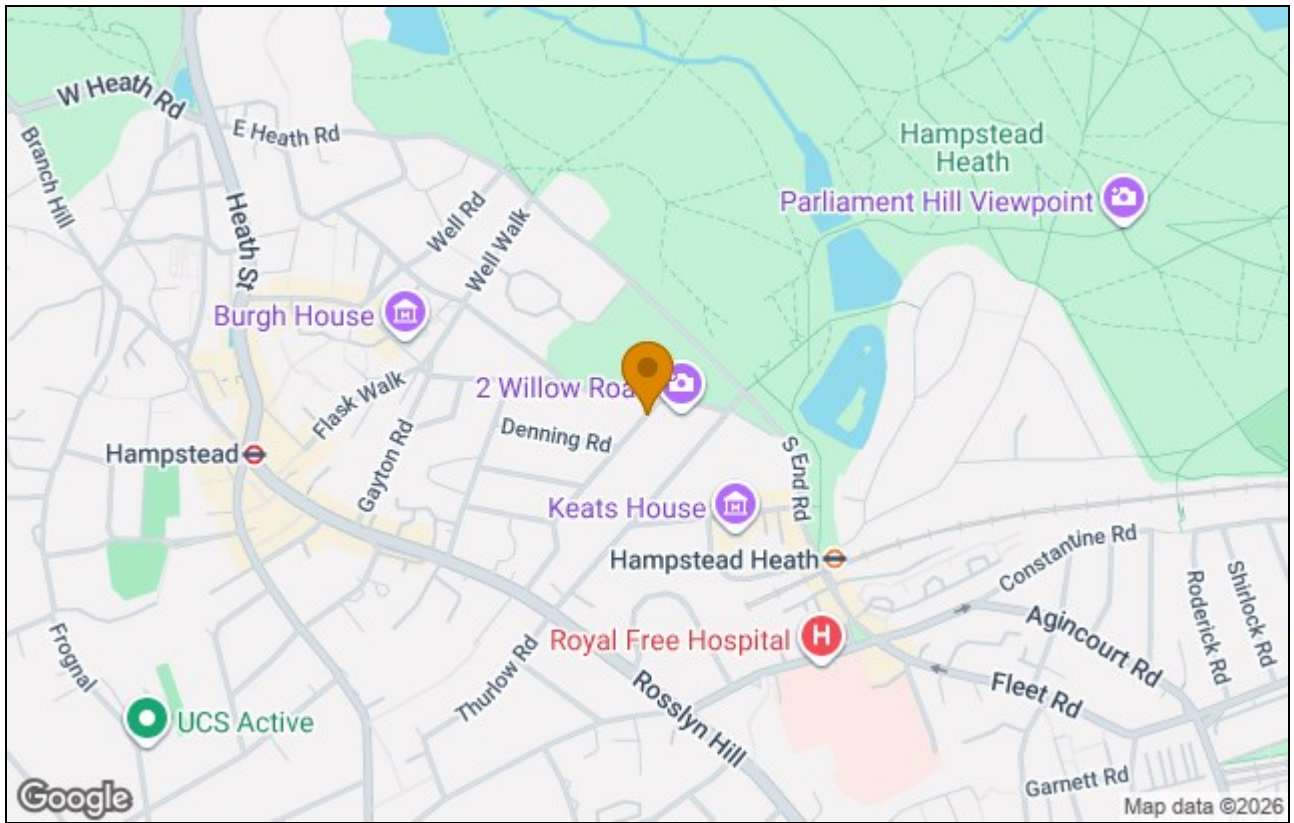
**Share of Freehold**



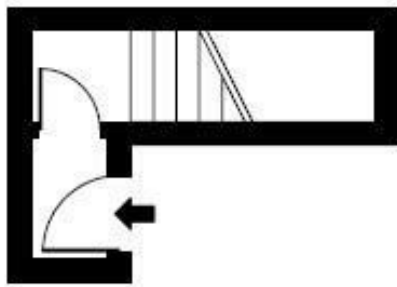




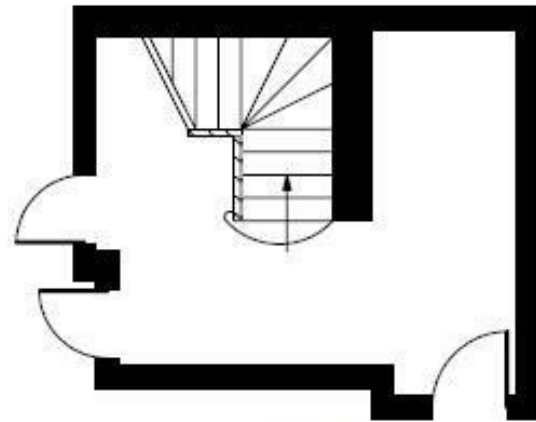




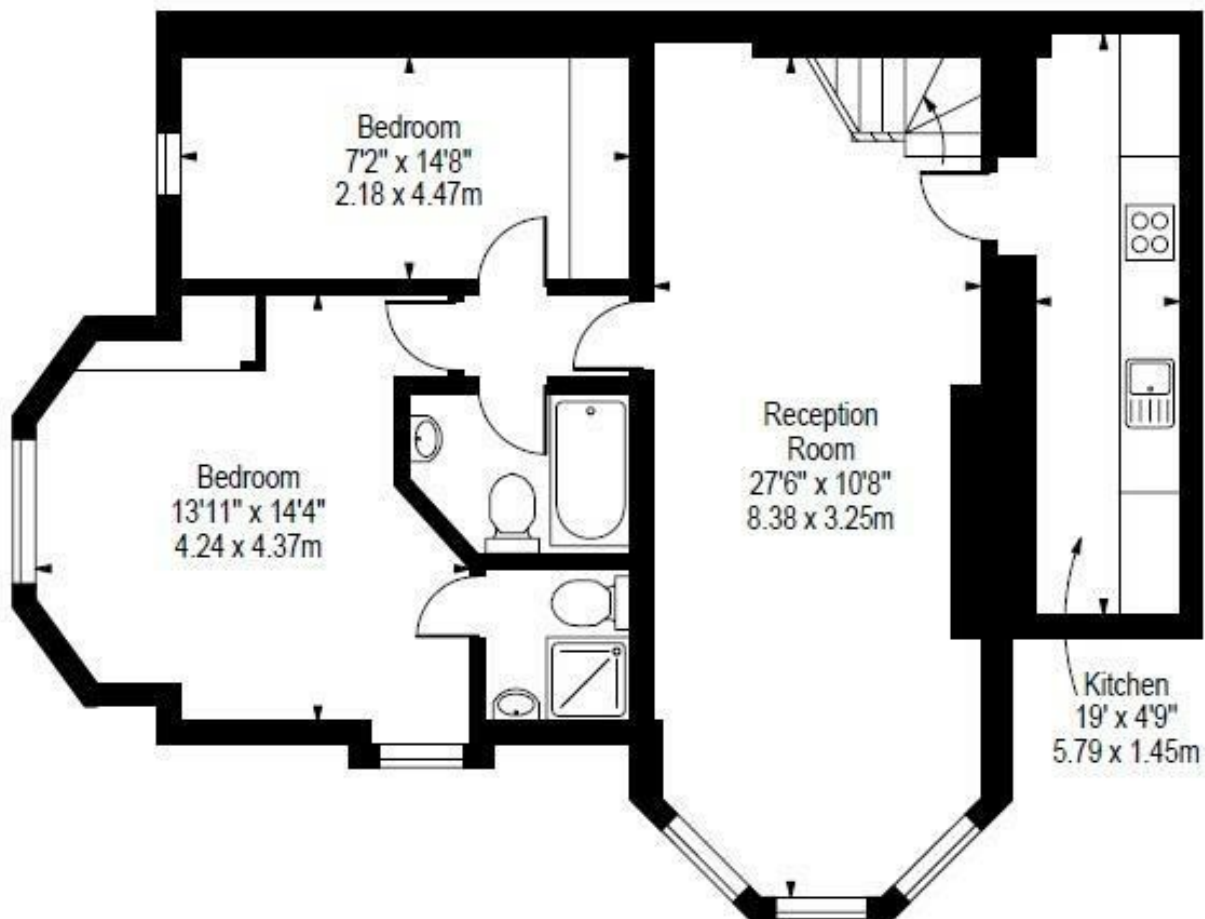
Willow Road,  
Hampstead, NW3 1TH



Ground Floor  
Stairwell



Ground Floor  
Communal Entrance Hall



Lower Ground Floor

**Approx Gross Internal Area 840 Sq Ft - 78.04 Sq M**  
(Excluding Ground Floor Communal Entrance Hall)

For Illustration Purposes Only - Not To Scale

Floor Plan by [www.bpmmediagroup.com](http://www.bpmmediagroup.com)

Ref. No. P45594